



**AN ONLINE NAVIGATION SYSTEM THAT CAN  
CONNECT ORGANIZATIONS TO ADDRESS  
THE PERMIAN BASIN'S SOCIAL, HEALTH,  
AND EDUCATIONAL NEEDS.**

**The PB Connect Navigation System  
benefits individuals and families in the  
following areas:**

- Food
- Housing
- Transportation
- Child and Elderly Care
- Education, and MORE!

**OUR MISSION IS TO PROVIDE A SYSTEM  
THAT SUPPORTS INDIVIDUALS, FAMILIES,  
AND AGENCIES TO FIND PROGRAMS,  
SERVICES, AND RESOURCES THAT HELP  
THEM MEET THEIR NEEDS.**

Scan the QR Code below or visit  
[www.pbconnect.org](http://www.pbconnect.org) to learn more!



**RAISED HERE. STAYS HERE.**  
Did you know that **98.5%** of every  
dollar raised stays right here in  
Midland?

**THANK YOU FOR YOUR SUPPORT!**

To learn more, visit:  
[www.uwmidland.org](http://www.uwmidland.org)



United Way of Midland  
1209 W. Wall St.  
Midland, TX 79701



432-685-7700



[www.uwmidland.org](http://www.uwmidland.org)



@uwmidlandtx



**SOCIAL,  
HEALTH, &  
WELL-BEING**

**EDUCATION  
SUCCESS**



**WORKFORCE  
DEVELOPMENT**



**UNITED WAY**  
of Midland

# WHO WE ARE

## Our Mission:

The mission of the United Way of Midland is to improve the quality of life in Midland by uniting community resources with identified needs.

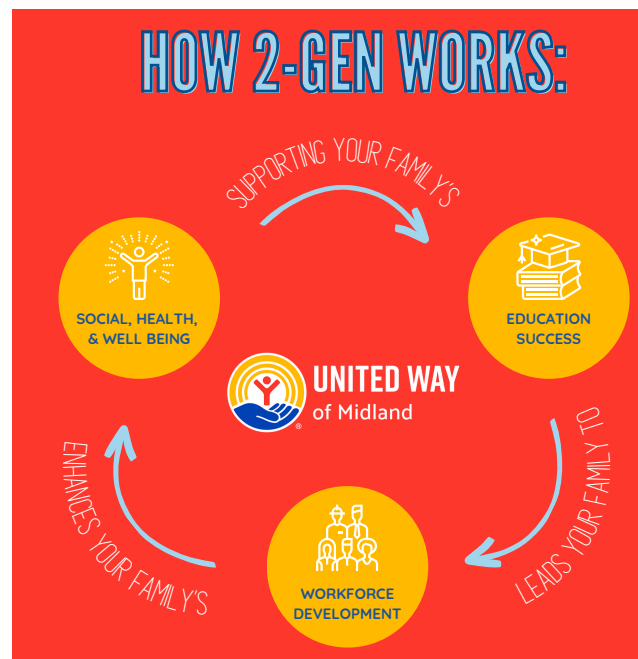
## What We Do:

We are here to build a supportive family system across all generations that connects individuals, families, and agencies to programs, services, and resources, empowering them to meet their unique needs. With our PB Connect Navigation System, 2-Gen Model, and Community Initiatives, we are bridging the path to education success, workforce development, and social, health, and well-being for families.



## 2-GEN VISION FOR MIDLAND:

Our 2-Gen - Pathways for Families mission focuses on families having access to programs and services that support the needs of all generations.



- **Education Success:** Families achieve education success through high-quality education for children ages 0-17 and adult education/job training leading to the potential of employment with family-sustaining wages.
- **Social, Health, and Well-Being:** Families are mentally and physically healthy and have the knowledge needed to access resources and services that help meet their goals.
- **Workforce Development:** Families attain financial security through robust financial education, workforce/career exposure and increased economic assets.

# PROJECTS & INITIATIVES

United Way of Midland is a convener, bringing organizations and community leaders together for discussion and problem solving; we raise awareness, and mobilize volunteers to make a lasting change.

## Special Projects:

- Project Blueprint
- Executive Director's Training Series
- Excellence in Education Awards
- EFSP/ARPA Funds
- Innovative Grants



## Community Initiatives:

**Club Read** keeps children engaged and reading during the summer, to prevent summer reading loss. United Way of Midland collaborates with the Boys and Girls Club of Midland, Casa De Amigos, and Opportunity Tribe - Fun Academy.